

MANUFACTURER :- MASCON TECHNEEDS**CLIENT NAME :- -----****CONSULTANT :- -----****PO.NO :- -----****NOTES:-**

- 1- DO NOT SCALE THE DWG.
- 2- ALL DIMENSIONS ARE IN MM UNLESS OTHERWISE SPECIFIED.
- 3- GENERAL TOLERANCES = ± 0.2 .
- 4- MATERIAL WILL BE AS PER CUSTOMER REQUIREMENT. EXCEPT FOR STANDARD PARTS.

TECHNICAL SPECS.:-

- Body Test Pressure : 16 Bar.
- Seat Test Pressure : 10 Bar.
- Internal Surface Finish : ≤ 0.4 Micron.
- External Surface finish : As Cast.
- Valve Rating : PN10.
- Actuator Inlet Connection Size : $\frac{1}{8}$ " BSP(F).
- Max. Temperature : STD-120° C.
- Actuating Pressure 5 To 7 Bar.

STANDARD :-

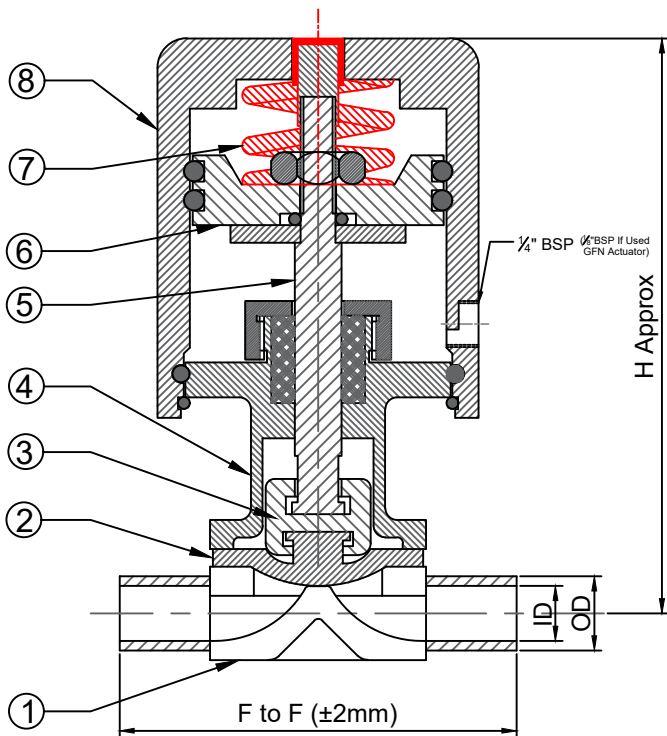
- Designing - BS EN 13397 : 2002,
- Pipe Connection: ASME BPE : 2007,
- Face to Face : BS EN 558-1 :1996.

DIAPHRAGM :-

- Optional -ED+TF, EPDM,SILICON, ED+TFP .

REMARKS :-

- F To F For DN8, DN10 & DN15 -92 (If used ED+TFP)



8	ACTUATOR	GFN / SS 304	1
7	ACTUATOR SPRING	SPRING STEEL	2
6	PISTON	AL.	1
5	SPINDLE	SS 304	1
4	VALVE BONNET	SS 304	1
3	COMPRESSOR	SS 304	1
2	DIAPHRAGM	OPTIONAL	1
1	VALVE BODY	SS 316L	1
NO	DESCRIPTIONS	MOC	Qty.

Size	F To F	OD	ID	H	W
DN 8	68	6.35	3.05	100	55
DN 10	68	9.35	6.23	100	55
DN 15	68	12.7	9.4	100	55

DESCRIPTION : PNEUMATIC DIAPHRAGM VALVE .

DRAW BY	KALPESH	13/08/2021	FOR :	REV.:- 0
DESIGN BY	SANDEEP	13/08/2021	SCALE : NTS	SHEET 1 OF 1. PROJ.
CHD. BY	SANDEEP	13/08/2021	MODEL: 260P	
APPD. BY	PRK Sir	13/08/2021	DRG. NO : GA/260P/13-08-21	

