

**MANUFACTURER :- MASCON TECHNEEDS****CLIENT NAME :- -----****CONSULTANT :- -----****PO.NO :- -----****NOTES:-**

- 1- DO NOT SCALE THE DWG.
- 2- ALL DIMENSIONS ARE IN MM UNLESS OTHERWISE SPECIFIED.
- 3- GENERAL TOLERANCES =  $\pm 0.2$ .
- 4- MATERIAL WILL BE AS PER CUSTOMER REQUIREMENT. EXCEPT FOR STANDARD PARTS.

**TECHNICAL SPECS.:-**

- Body Test Pressure : 16 Bar.
- Seat Test Pressure : 10 Bar.
- Internal Surface Finish :  $\leq 0.4$  Micron.
- External Surface finish : As Cast.
- Valve Rating : PN10.
- Actuator Inlet Connection Size :  $\frac{1}{8}$ " BSP(F).
- Max. Temperature : STD-120° C.
- Actuating Pressure 5 To 7 Bar.

**STANDARD :-**

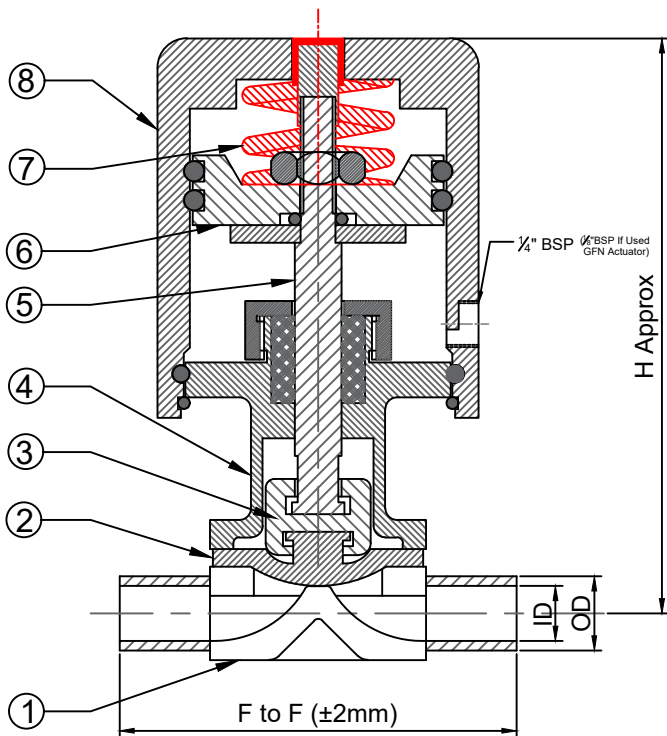
- Designing - BS EN 13397 : 2002,
- Pipe Connection: ASME BPE : 2007,
- Face to Face : BS EN 558-1 :1996.

**DIAPHRAGM :-**

- Optional -ED+TF, EPDM,SILICON, ED+TFP .

**REMARKS :-**

- F To F For DN8, DN10 & DN15 -92 ( If used ED+TFP )



8	ACTUATOR	GFN / SS 304	1
7	ACTUATOR SPRING	SPRING STEEL	2
6	PISTON	AL.	1
5	SPINDLE	SS 304	1
4	VALVE BONNET	SS 304	1
3	COMPRESSOR	SS 304	1
2	DIAPHRAGM	OPTIONAL	1
1	VALVE BODY	SS 316L	1
<b>NO</b>	<b>DESCRIPTIONS</b>	<b>MOC</b>	<b>Qty.</b>

Size	F To F	OD	ID	H	W
DN 8	68	6.35	3.05	100	55
DN 10	68	9.35	6.23	100	55
DN 15	68	12.7	9.4	100	55

DESCRIPTION : PNEUMATIC DIAPHRAGM VALVE .

DRAW BY	KALPESH	13/08/2021	FOR :	REV.:- 0
DESIGN BY	SANDEEP	13/08/2021	SCALE : NTS	SHEET 1 OF 1. PROJ.
CHD. BY	SANDEEP	13/08/2021	MODEL: 260P	
APPD. BY	PRK Sir	13/08/2021	DRG. NO : GA/260P/13-08-21	



DRG. NO : GA/260P-02/13-08-21