

MANUFACTURER :- MASCON TECHNEEDS.

CLIENT NAME :- -----

CONSULTANT :- -----

PO.NO :- -----

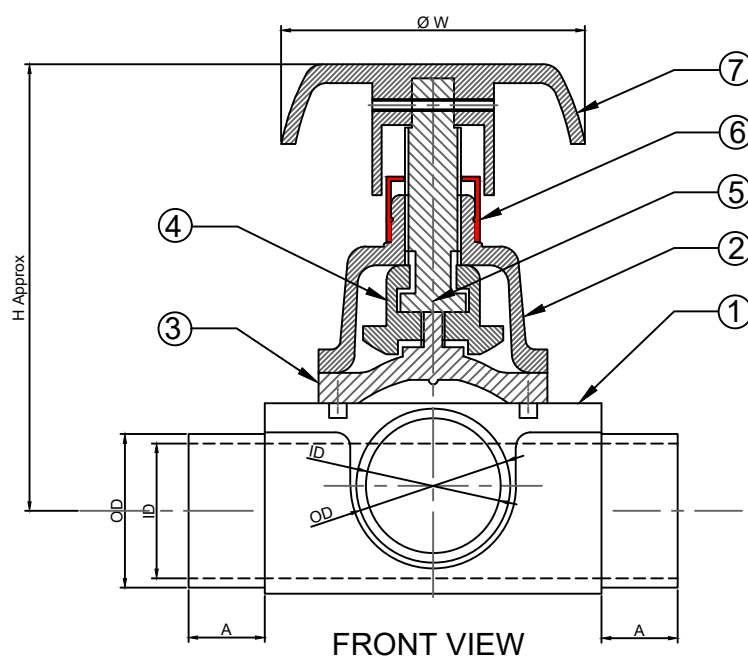
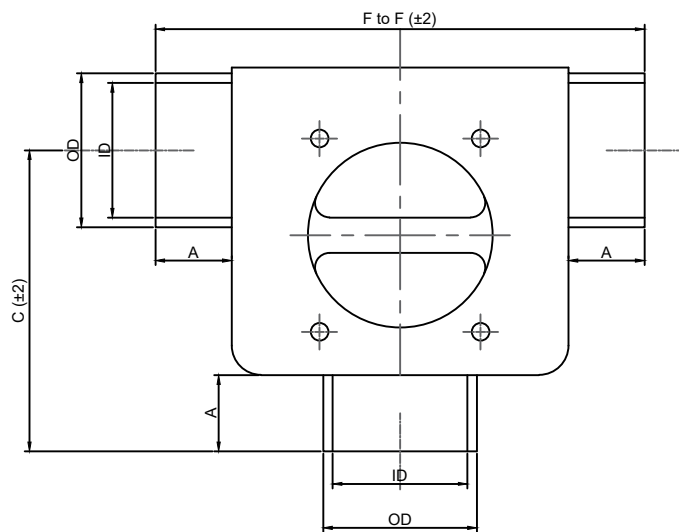
NOTES:-

1- DO NOT SCALE THE DWG.

2- ALL DIMENSIONS ARE IN MM UNLESS OTHERWISE SPECIFIED.

3- GENERAL TOLERANCES =  $\pm 0.2$ .

4- MATERIAL WILL BE AS PER CUSTOMER REQUIREMENT.  
EXCEPT FOR STANDARD PARTS.



### TECHNICAL SPECS.:-

- Body Test Pressure : 16 Bar.
- Seat Test Pressure : 10 Bar.
- Internal Surface Finish :  $\leq 0.4$  Micron.
- External Surface finish : As Cast.
- Valve Rating : PN10.
- Max. Temperature : STD-120° C.

### STANDARD :-

- Designing - BS EN 13397 : 2002,
- Pipe Connection: ASME BPE : 2007,
- Face to Face : BS EN 558-1 :1996.

### DIAPHRAGM :-

- Optional -ED+TF, EPDM,SILICON, ED+TFP .

7	WHEEL	ABS / SS 304	1
6	INDICATOR	PP	1
5	SPINDLE	SS 304	1
4	COMPRESSOR	SS 304	1
3	DIAPHRAGM	OPTIONAL	1
2	VALVE BONNET	SS 304	1
1	VALVE BODY	SS 316L	1
<b>NO</b>	<b>DESCRIPTIONS</b>	<b>MOC</b>	<b>Qty.</b>

Size	A	OD	ID	F to F	C	H	W
DN 20	25	19.1	15.8	104	64	88	65
DN 25	25	25.4	22.2	115	69	116	88
DN 40	25	38.1	34.8	135	87	157	120
DN 50	25	50.8	47.6	165	106	180	120
DN 65	25	63.5	60.3	188	126	184	120

 **MASCON**<sup>®</sup>

DESCRIPTION : ZERO DEAD LEG VALVE MANUAL( T TYPE )

DRAW BY	KALPESH	13/08/2021	FOR :	REV.:- 0
DESIGN BY	SANDEEP	13/08/2021	SCALE : NTS	SHEET 1 OF 1.
CHD. BY	SANDEEP	13/08/2021	MODEL: 2700M	PROJ.
APPD. BY	PRK Sir	13/08/2021	DRG. NO :GA/2700M/13-08-21	