

**MANUFACTURER :- MASCON TECHNEEDS**

**CLIENT NAME :- -----**

**CONSULTANT :- -----**

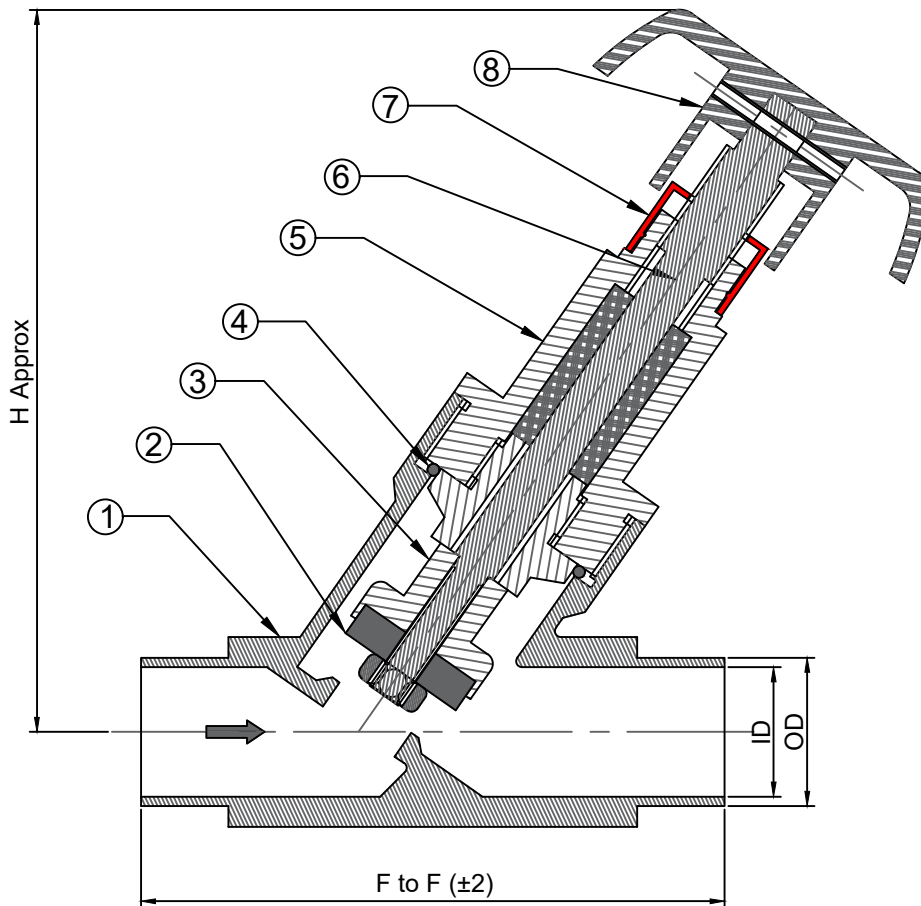
**PO.NO :- -----**

**NOTES:-**

- 1- DO NOT SCALE THE DWG.
- 2- ALL DIMENSIONS ARE IN MM UNLESS OTHERWISE SPECIFIED.
- 3- GENERAL TOLERANCES = ±0.2.
- 4- MATERIAL WILL BE AS PER CUSTOMER REQUIREMENT. EXCEPT FOR STANDARD PARTS.

**TECHNICAL SPECS.:-**

- Body Test Pressure : 16 Bar.
- Seat Test Pressure : 10 Bar.
- External Surface finish : As Cast.
- Valve Rating : PN10.
- Max. Temperature : STD-120° C.



**STANDARD :-**

- Pipe Connection: ASME BPE : 2007,

Size	F TO F	OD	ID	H
DN 15	118	12.7	9.4	121
DN 20	88	19.1	15.8	121
DN 25	100	25.4	22.2	124
DN 40	108	38.1	34.8	160
DN 50	132	50.8	47.6	164
DN 65	178	63.5	60.3	161

8	WHEEL	ABS	1
7	SLEEVE	PP	1
6	SPINDLE	SS 316	1
5	BONNET	SS 304	1
4	SEALING RING	VITON	1
3	BUD CAP	SS 316	1
2	SEAT	PTFE	1
1	VALVE BODY	SS 316	1
<b>NO</b>	<b>DESCRIPTIONS</b>	<b>MOC</b>	<b>Qty.</b>



DESCRIPTION : MANUALLY OPERATED 'Y' TYPE PISTON VALVE.

DRAW BY	KALPESH	13/08/2021	FOR :	REV.:- 0
DESIGN BY	SANDEEP	13/08/2021	SCALE : NTS	SHEET 1 OF 1.
CHD. BY	SANDEEP	13/08/2021	MODEL:212M/BW	PROJ.
APPD. BY	PRK Sir	13/08/2021	DRG. NO : GA/212M/BW/13-08-21	