

MANUFACTURER :- MASCON TECHNEEDS.

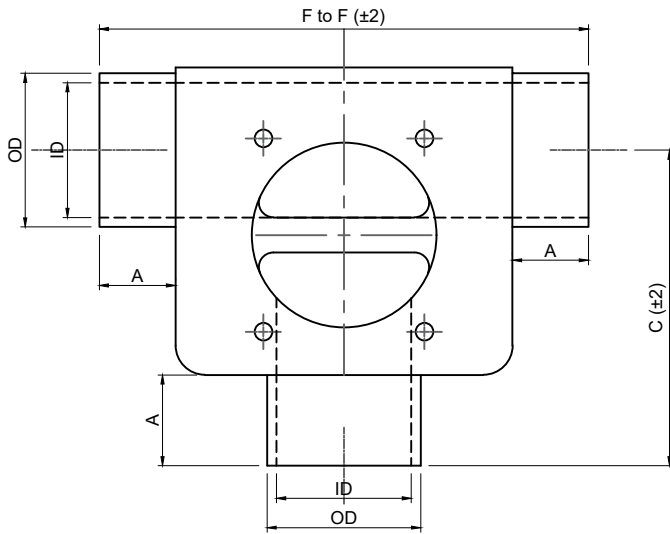
CLIENT NAME :- -----

CONSULTANT :- -----

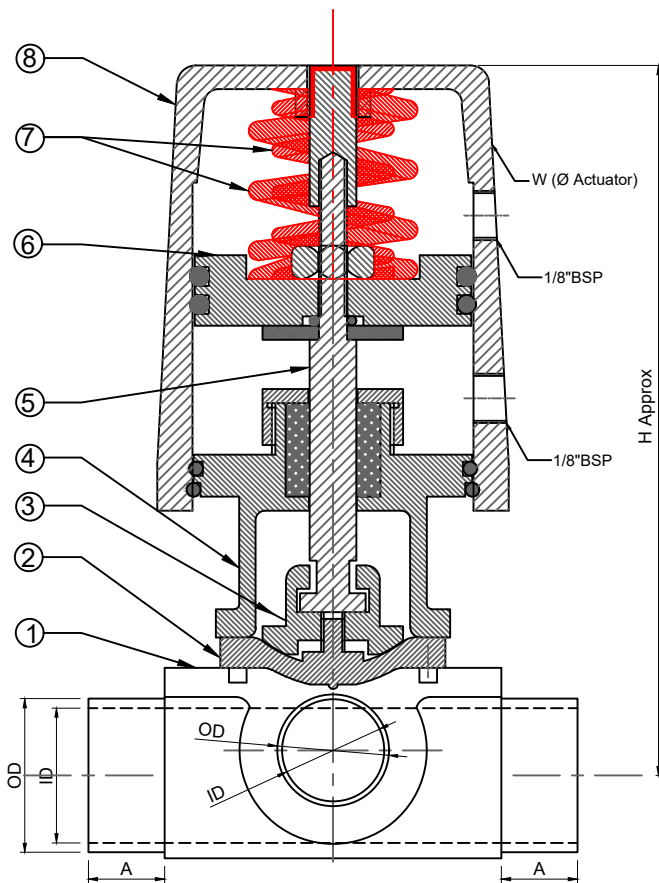
PO.NO :- -----

NOTES:-

- 1- DO NOT SCALE THE DWG.
- 2- ALL DIMENSIONS ARE IN MM UNLESS OTHERWISE SPECIFIED.
- 3- GENERAL TOLERANCES = ± 0.2 .
- 4- MATERIAL WILL BE AS PER CUSTOMER REQUIREMENT. EXCEPT FOR STANDARD PARTS.



TOP VIEW



FRONT VIEW

TECHNICAL SPECS.:-

- Body Test Pressure : 16 Bar.
- Seat Test Pressure : 10 Bar.
- Internal Surface Finish : ≤ 0.4 Micron.
- External Surface finish : As Cast.
- Valve Rating : PN10.
- Actuator Inlet Connection Size : $\frac{1}{8}$ " BSP(F).
- Max. Temperature : STD-120° C.
- Actuating Pressure 5 To 7 Bar.

STANDARD :-

- Designing - BS EN 13397 : 2002,
- Pipe Connection: ASME BPE : 2007,
- Face to Face : BS EN 558-1 :1996.

DIAPHRAGM :-

- Optional -ED+TF, EPDM,SILICON, ED+TFP .

NO	DESCRIPTIONS	MOC	Qty.
8	ACTUATOR	GFN	1
7	ACTUATOR SPRING	SPRING STEEL	2
6	PISTON	AL.	1
5	SPINDLE	SS 304	1
4	VALVE BONNET	SS 304	1
3	COMPRESSOR	SS 304	1
2	DIAPHRAGM	OPTIONAL	1
1	VALVE BODY	SS 316L	1

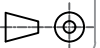
Size	A	OD	ID	F to F	C	H	W
DN 20	25	19.1	15.8	104	64	143	97
DN 25	25	25.4	22.2	115	69	150	97
DN 40	25	38.1	34.8	135	87	202	153
DN 50	25	50.8	47.6	165	106	211	153
DN 65	25	63.5	60.3	188	126	211	153

Note:- Mascon Reserve all the Rights to Change And Modifie Design of the Valve Keeping all The Approved Dimensions and functioning Parameter Intact.



DESCRIPTION : ZERO DEAD LEG VALVE PNEUMATIC (T TYPE)

DRAW BY	KALPESH	13/04/2022	FOR :	REV.:- 0
DESIGN BY	SANDEEP	13/04/2022	SCALE : NTS	SHEET 1 OF 1.
CHD. BY	SANDEEP	13/04/2022	MODEL:2700P	PROJ.
APPD. BY	PRK Sir	13/04/2022	DRG. NO :GA/2700P/13-04-22	



DRG. NO : GA/2700P/13-04-22